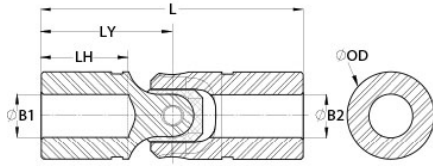




## US16-12MM-12MM-F

Ruland US16-12MM-12MM-F, 12mm x 12mm Single Universal Joint, Friction Bearing, Steel, 25.3mm OD, 85.9mm Length



### Description

Ruland US16-12MM-12MM-F is a single cardan friction bearing universal joint with 12mm x 12mm bores, 25.3mm OD, and 85.9mm length. It is ideal for applications with space constraints and has higher torque capacity than equivalently sized double universal joints. This plain bearing universal joint is comprised of pins and blocks that are precision machined, selectively heat treated, and ground for high strength, accuracy, and wear resistance. The combination of these components with precision ground and hardened yoke ears allow for a longer lifespan, increased performance in demanding applications, and greater angular misalignment of up to 45° when compared to commodity style single universal joints. US16-12MM-12MM-F is made from high grade alloy steel for durability and high strength. It can be combined with boot UBOOT16/25-NI-KIT to protect the joint from unwanted contaminants such as dust or water and self lubricate reducing maintenance time. This single cardan universal joint is manufactured in the USA by Belden Universal for strict control of processes.

### Product Specifications

<b>Bore (B1)</b>	12 mm	<b>Small Bore (B2)</b>	12 mm
<b>B1 Max Shaft Penetration</b>	30.2 mm	<b>B2 Max Shaft Penetration</b>	30.2 mm
<b>Joint Outer Diameter (OD)</b>	25.3 mm	<b>Bore Tolerance</b>	+0.025 mm / -0.000 mm
<b>Length (L)</b>	85.9 mm	<b>Yoke Length (LY)</b>	42.9 mm
<b>Hub Depth (LH)</b>	30.2 mm	<b>Peak Torque</b>	254.2 Nm
<b>Rated Torque</b>	50.8 Nm	<b>Max Operating Angle</b>	45°
<b>Material Specification</b>	Alloy Steel	<b>Manufacturer</b>	Belden Universal
<b>Country of Origin</b>	USA	<b>Recommended Lubricant</b>	LUBRIPLATE No. 1200-2
<b>Matching Boot Cover</b>	<a href="#">UBOOT16/25-NI-KIT</a>	<b>UPC</b>	63452933061
<b>Tariff Code</b>	8483.60.4000	<b>UNSPC</b>	25173810
<b>Note 1</b>	Performance ratings are for guidance only. The user must determine suitability for a particular application.		
<b>Prop 65</b>	⚠️ WARNING This product can expose you to the chemical Ethylene Thiourea, known to the State of California to cause cancer and birth defects or other reproductive harm. For more information go to <a href="http://www.P65Warnings.ca.gov">www.P65Warnings.ca.gov</a> .		